

Teaching Tomorrow's Accountants: AI Tools and Techniques for Educators

David A. Wood
Brigham Young University
davidwood@byu.edu





All I did...

Generate a 20 second video to recruit students into accounting. It should be funny, upbeat, and exciting.

A top-down view of a wooden desk cluttered with various school supplies. In the top left, a black calculator is partially visible. To its right is a wooden pencil. Further right is a green notebook with a white page showing some writing. In the bottom left, there's a green pencil sharpener, a small wooden block, and a green pencil. In the bottom center, a green pencil lies horizontally. To its right is a wooden ruler. In the bottom right corner, a magnifying glass is visible. The word 'PROMPTING' is written in large, bold, green and grey letters across the center of the image.

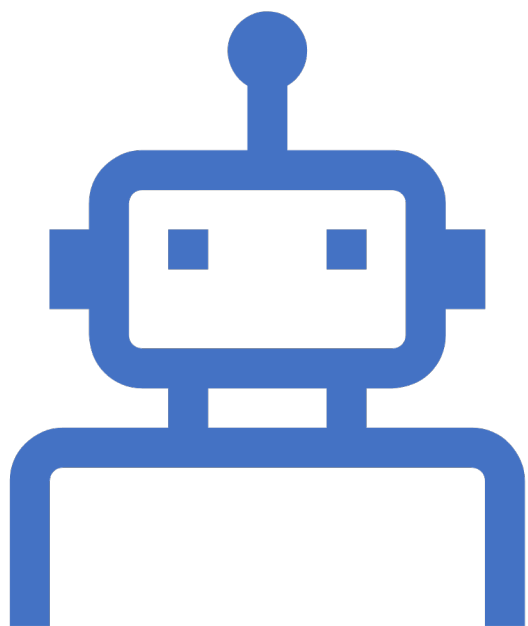
PROMPTING



Question

Q1: How often do you currently use artificial intelligence large language models (LLM), like ChatGPT, Gemini, Llama, etc.?

- Never used / A few times
- Monthly
- Weekly
- Daily
- Multiple times per day

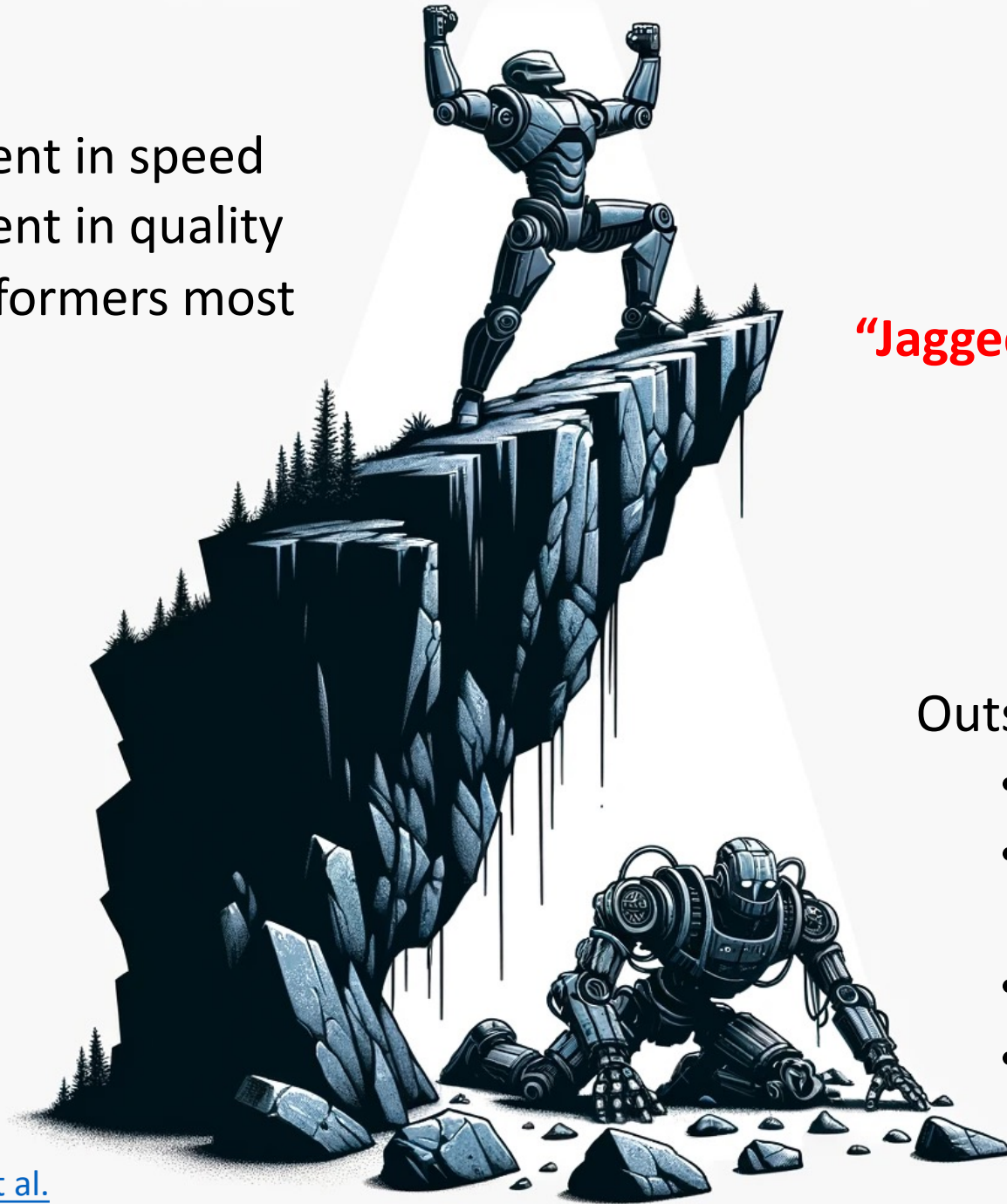


Quick definitions

- Artificial Intelligence (AI)
- Generative AI (GENAI)
- Large Language Models (LLMs)
- Hallucinations
- Prompt
- Human-in-the-Middle
- RAG (Retrieval Augmented Generation)

Within the frontier:

- 25% improvement in speed
- 40% improvement in quality
- Helped low performers most



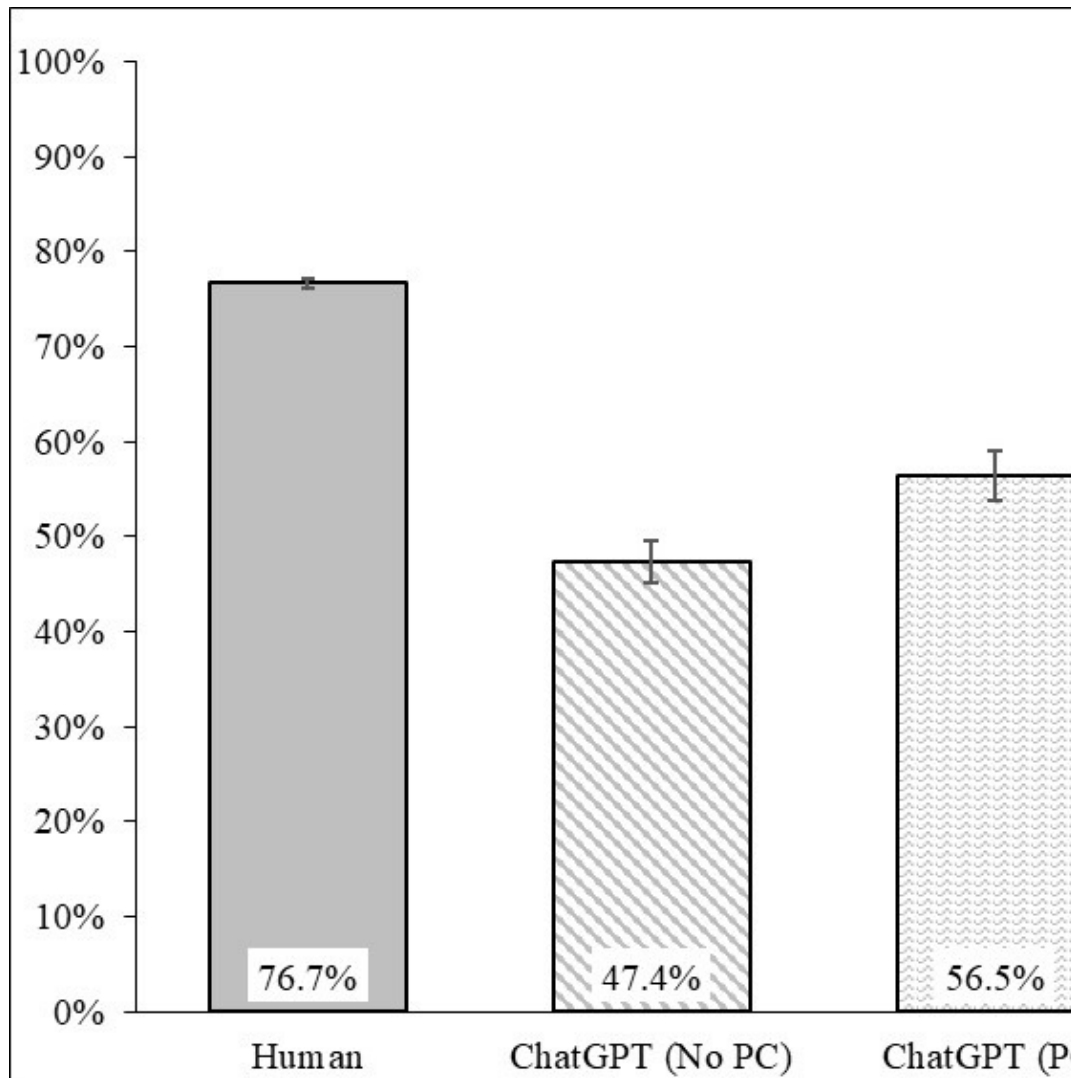
“Jagged Technological Frontier”

Outside the frontier:

- Reduced accuracy 19%
- Accuracy reduced most for those trained extra in AI
- 18% improvement in speed
- 21% improvement in recommendation quality

Where is the
“Jagged
Frontier” in
Accounting?

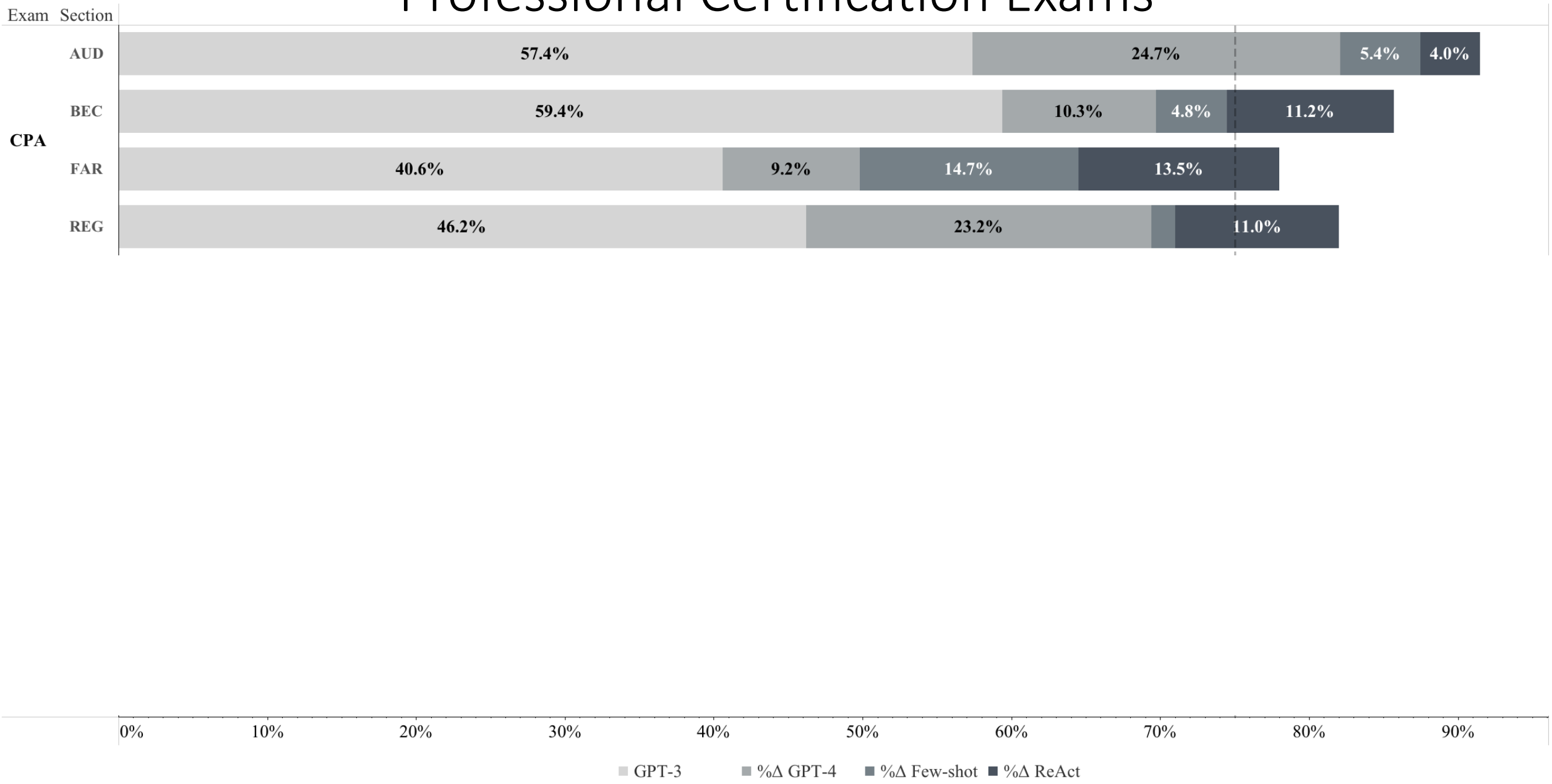




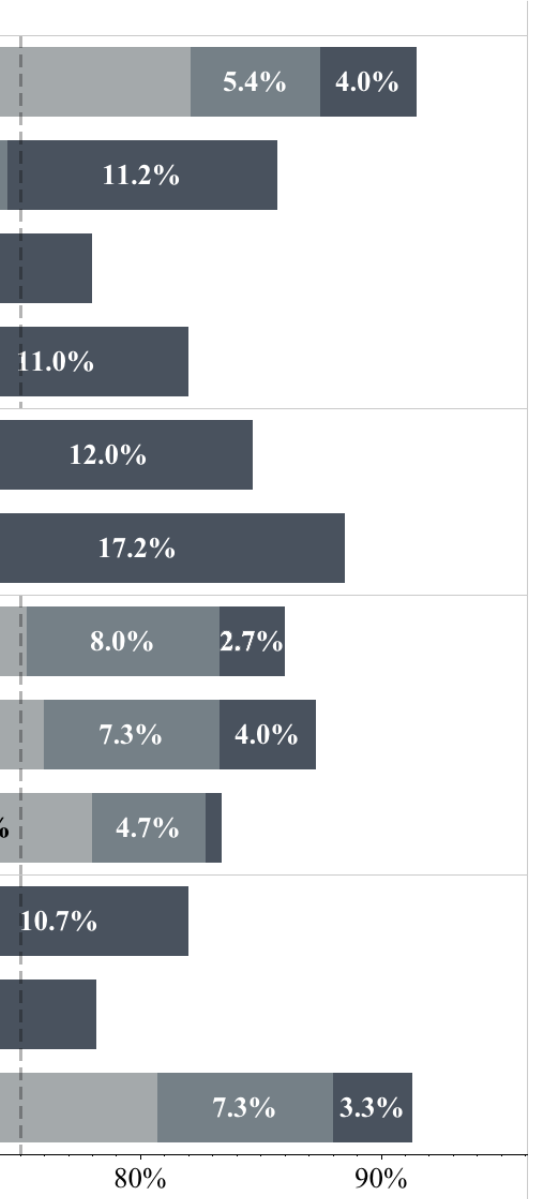
How smart is C



Professional Certification Exams



Exam	Section
CPA	AUD
	BEC
	FAR
	REG
CMA	Part 1
	Part 2
CIA	Part 1
	Part 2
	Part 3
EA	BUS
	IND
	RPP
0%10%	





Question

Q3: Have you used generative AI technology in the classroom?

- No, I have not and do not plan to use it.
- No, I have not but I plan to.
- Yes, I have talked about it in class but not used it.
- Yes, I have had students do a few things with it.
- Yes, I use it a great deal in the classroom.

Figure 2
Seeking Help Behavior from Information and Support Resources

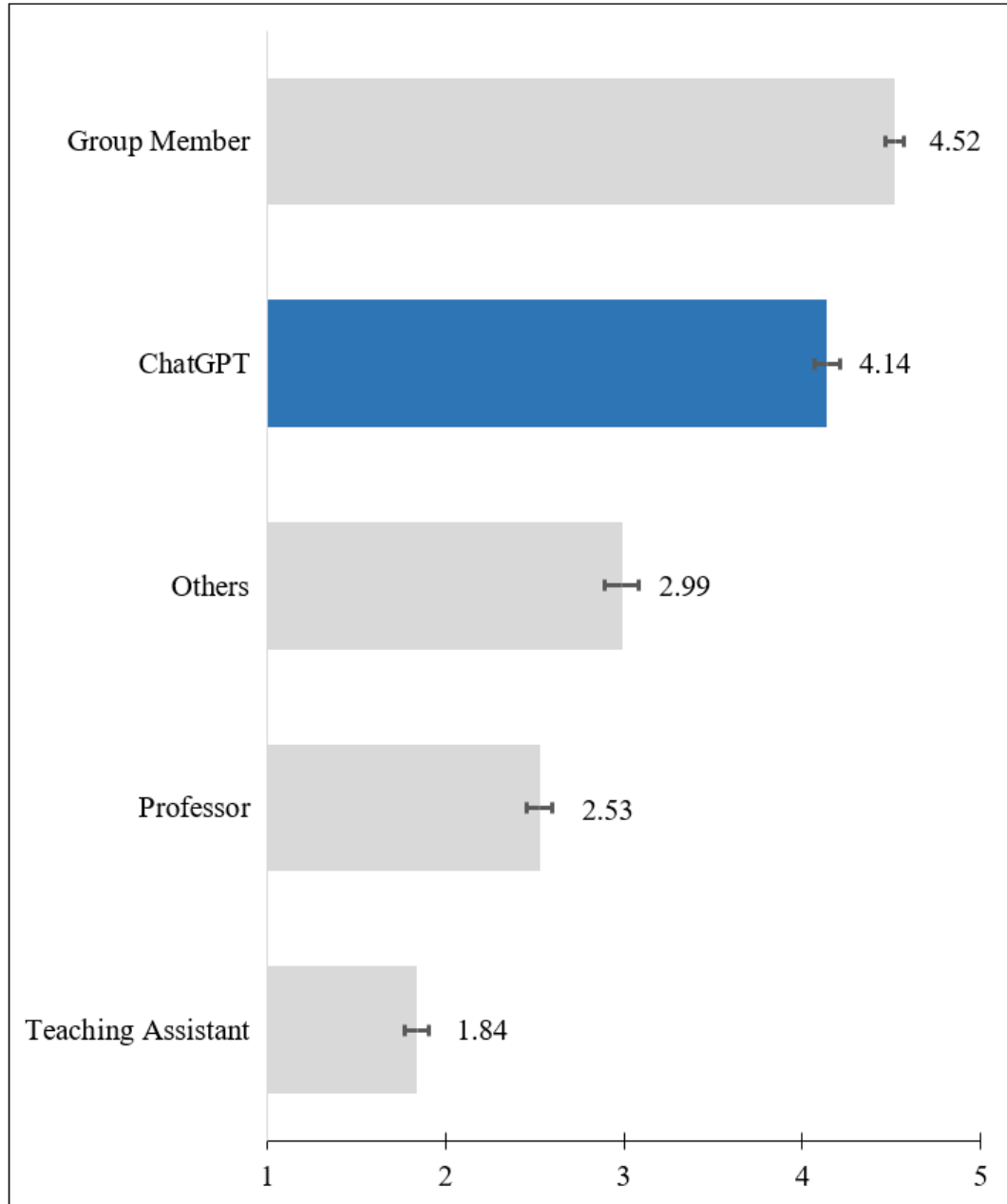


Figure 1
Rank Ordering of Information and Support Resources

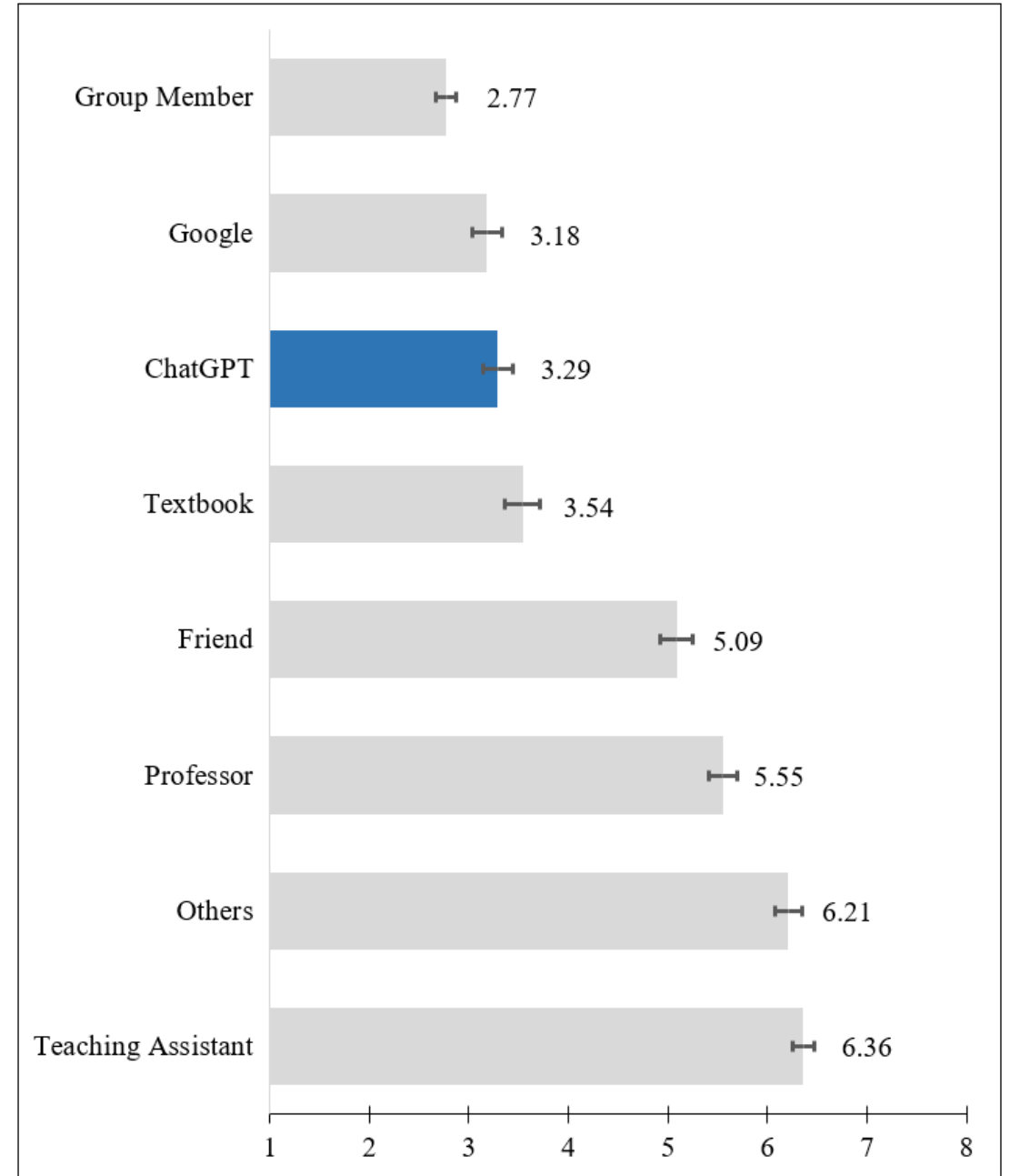
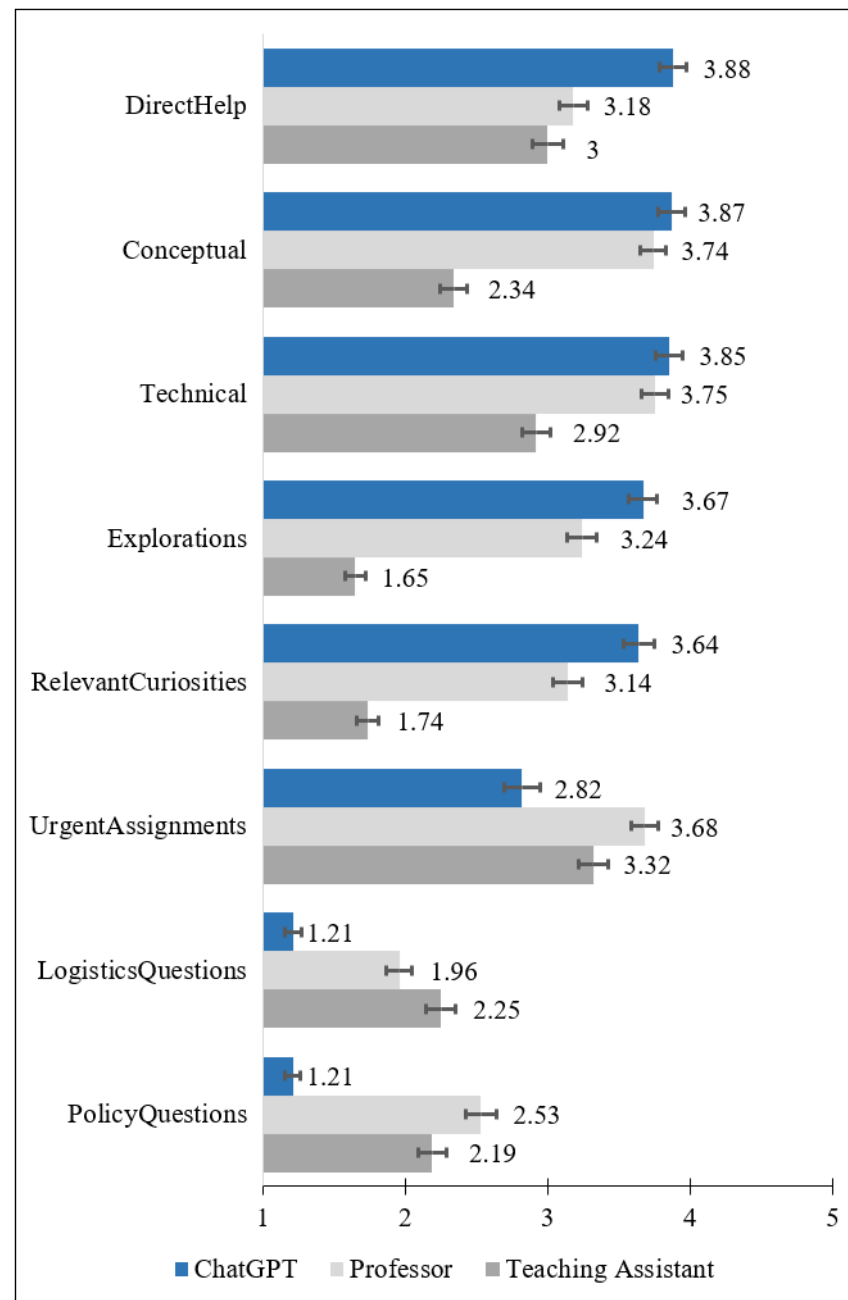


Figure 4
Types of Questions and Tasks that Users Used Information and Support Resources





Question

Q4: Indicate which you believe is true about the majority of students in your class.

- Most students are using generative AI to cheat
- Some students are using generative AI to cheat
- Equal number of students are using generative to cheat and to enhance their learning
- Some students are using generative AI to enhance their learning
- Most students are using generative AI to enhance their learning

EYARC content we are covering today



PROMPT
ENGINEERING
CASE ([LINK](#))



TAXING
QUESTIONS, AI-
POWERED
ANSWERS ([LINK](#))



SWINDLE IN THE
AGE OF AI: AN AI
FORENSIC
CHALLENGE ([LINK](#))



IN
DEVELOPMENT...



New website to help
find materials

<https://eyarc.site/>

A little fun...



Prompt: I want a short humorous song about accounting. Make it very funny.

<http://suno.ai/>





Using ChatGPT to Make your Life Easier

- Develop curriculum
- Draft email responses
- Draft exams
- Create images/videos/fun stuff
- Teach students how to teach themselves
- Projects/deliverables more than just assignments
- Provide feedback
- Research: Writing papers (<https://lit-review-assistant.streamlit.app/>)

What we are producing with AI

- <https://www.techhub.training/>
- <https://www.linkedin.com/company/techhub-training/>





Question

Q4: Indicate your agreement with the following statement: TechHub.training is a valuable resource to help students practice and learn more about technology.

- Strongly disagree
- Disagree
- Neither agree nor disagree
- Agree
- Strongly agree



Question

Q5: How likely are you to use or to recommend materials from TechHub.training?

- Very Unlikely
- Unlikely
- Neither Unlikely nor Likely
- Likely
- Very Likely
- Material not Relevant to my Course

The background of the slide is a solid light gray. On the right side, there is a large, dense cluster of overlapping circles in various shades of red and purple, ranging from dark maroon to light lavender. Thin, light gray lines crisscross the background, particularly concentrated around the cluster of circles. The text 'Thank you!' is centered in the middle of the slide, underlined with a white wavy line.

Thank you!

davidwood@byu.edu